

2025 NFDA CONVENTION

CONVENTION SIGNAGE OPTIONS

NFDA

NATIONAL
FUNERAL
DIRECTORS
ASSOCIATION



ANTHONY KANIUK

AKaniuk@nfda.org

LORRI WAGNER

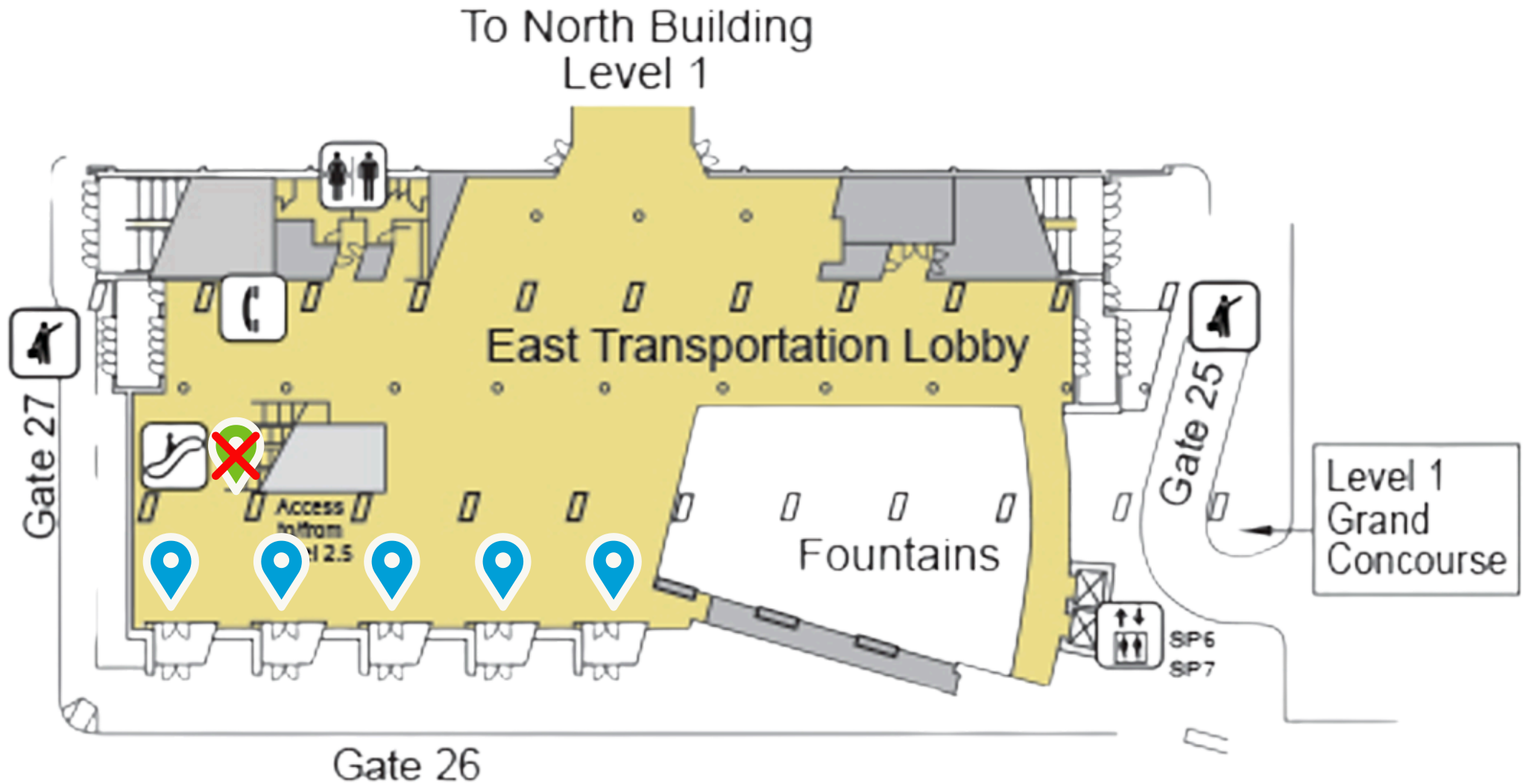
LWagner@nfda.org

PRESENTED BY: NFDA BUSINESS DEVELOPMENT TEAM



McCormick Place South Building Shuttle Pick-Up & Drop Off Level

*Most attendees will use this level





Gate 26

\$2500 single sided

Window Clings (minus doors) - 5 entrances
One set of windows

Call for double sided pricing



Escalator to level 2.5

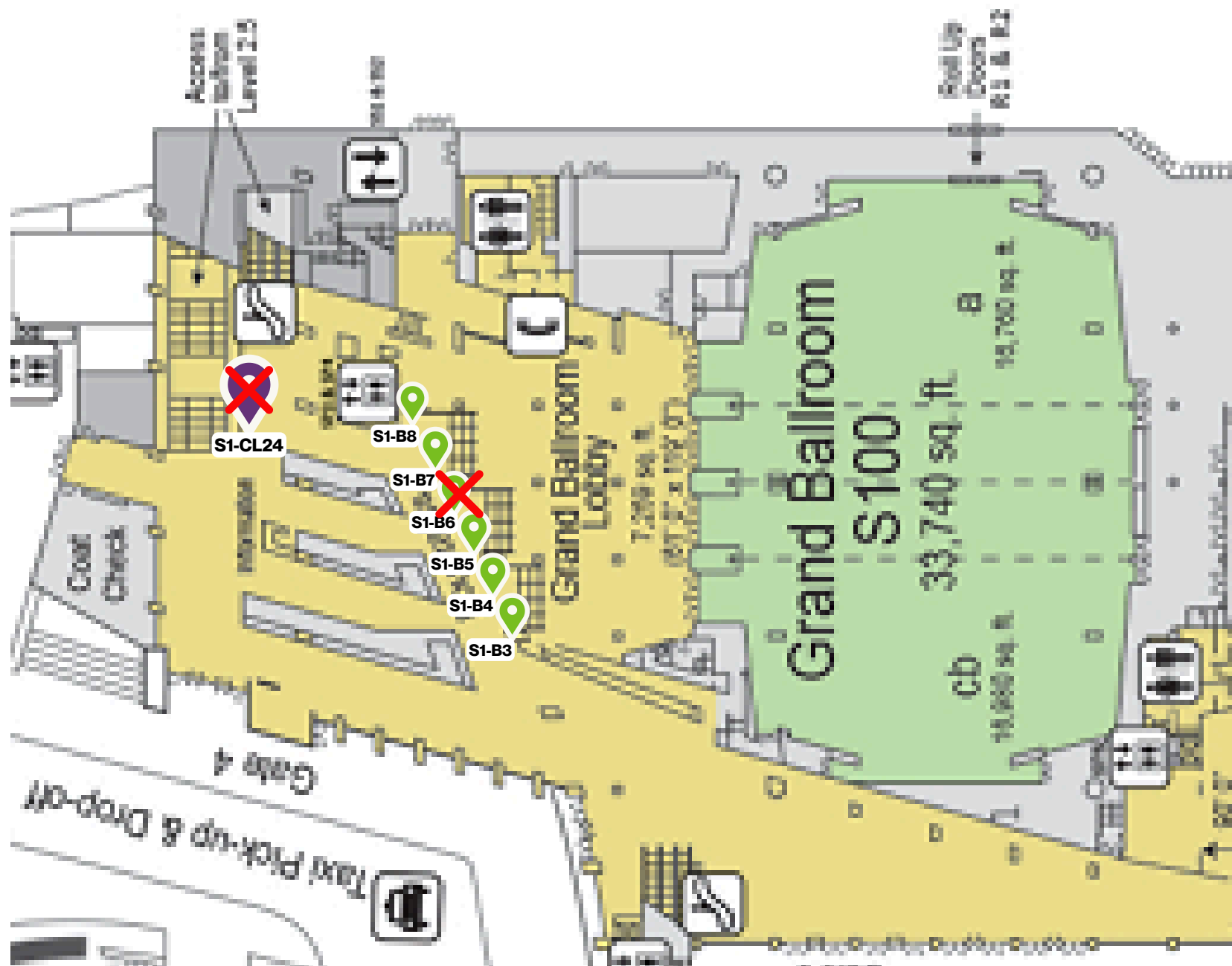
\$5400

Escalator Clings, Runners or Sides
Measurements

- side glass panels
- middle runners

McCormick Place South Building Level 1

General Sessions (Mon & Wed) & Service of Remembrance (Tue) in Grand Ballroom





\$5240

S1-CL24

21' wide x 10' high

Single sided graphic

Visible to all leaving the Grand Ballroom

Ballroom Entrance Overhangs



\$2200

S1-B3

12' x 7'

Single sided banner



\$3500

S1-B4

20' x 7'

Single sided banner



\$2500

S1-B5

14' x 7'

Single sided banner



SOLD

\$3500

S1-B6

20' x 7'
Single sided banner

\$2830

S1-B7

16' x 7'
Single sided banner

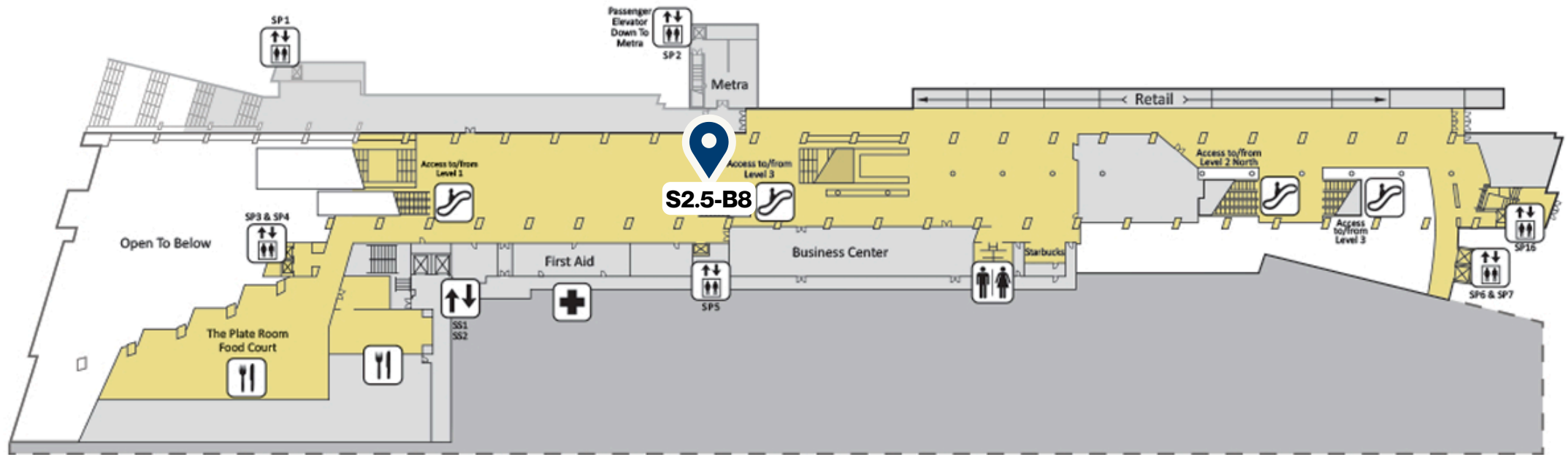
\$3320

S1-B8

19' x 7'
Single sided banner

McCormick Place South Building Level 2.5

*heading to expo floor from ballroom





\$TBD

S2.5-B8

24' x 3.5'

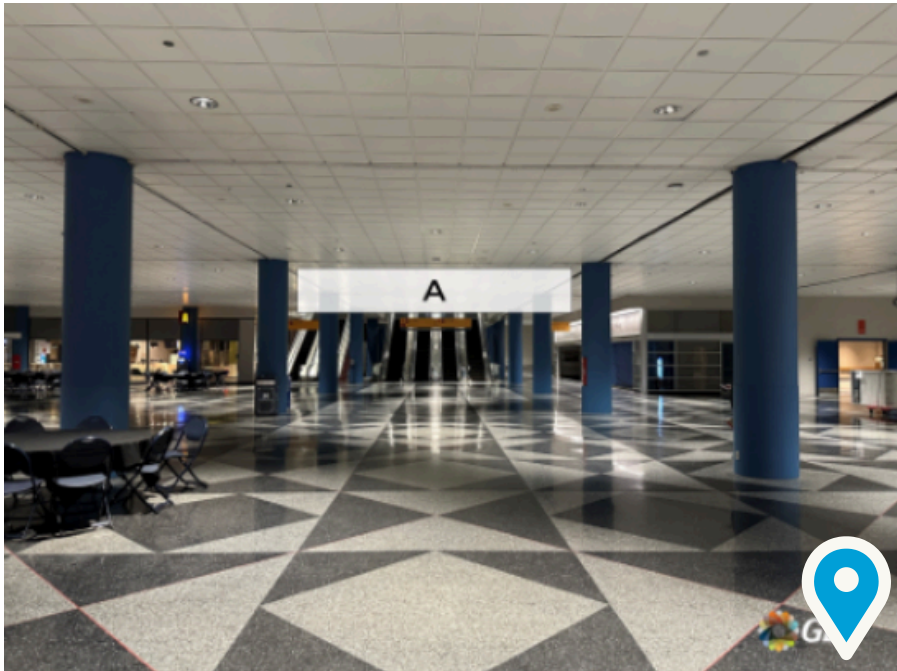
Single sided banner

HALF SIDE

McCormick Place North Building Level 2

Food Court Area below Expo Hall



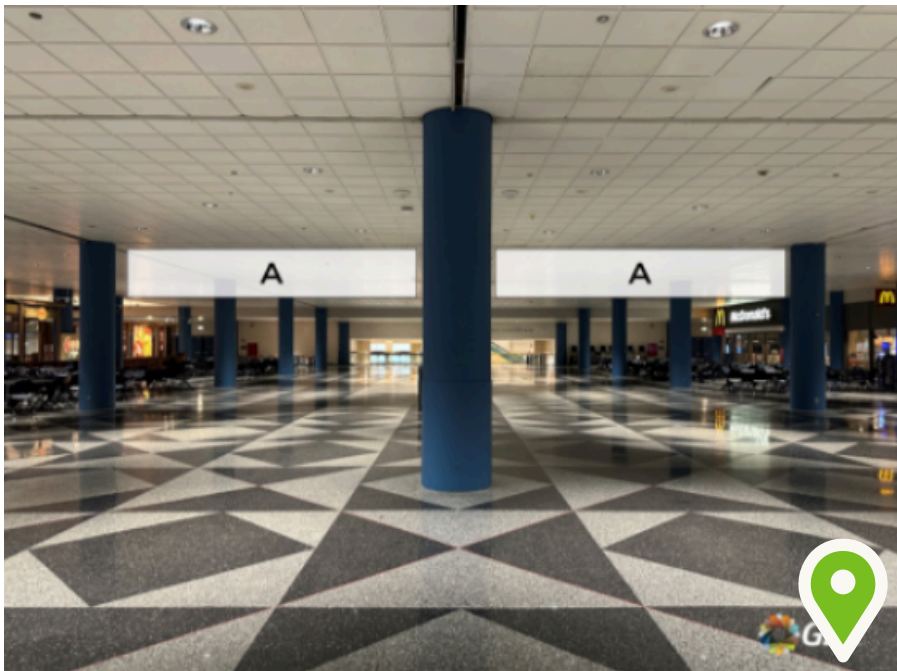


\$2500

N2-B2

25' x 4'

Double sided banner

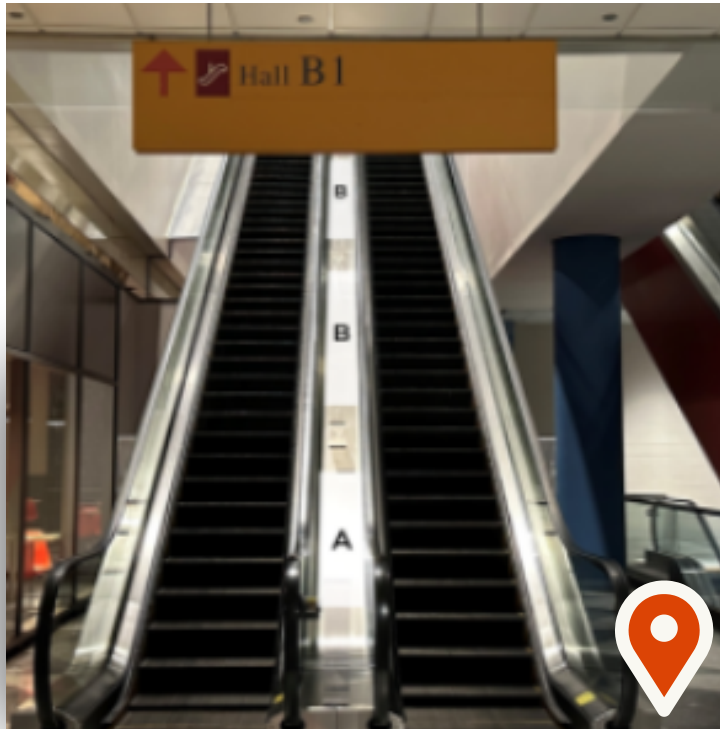


\$2500

N2-B3

25' x 4'

Double sided banner



\$2000

N2-ESC1

A = 15" wide x 142" (qty 1)

B = 15" wide x 159" (qty 2)

C = 15" wide x 158" (qty 1, at top, not shown)

Single sided banners



\$4900

N2-ESC2

A = 15" wide x 150" long (qty 1)

B = 15" wide x 134" long (qty 1)

C = 15" wide x 138" long (qty 1)

D = 15" wide x 145" long (qty 1, at top, not shown)

(3) sections available

Single sided banner

Grand Concourse / Registration Area / Expo Hall





\$4200

GC-B1

23' x 7'

Single sided banner



23' x 7'

Single sided banner



23' x 7'

Single sided banner



GC-B9

23' x 7'

Single sided banner



GC-B10

23' x 7'

Single sided banner



GC-B12

23' x 7'

Single sided banner



\$7500

GC-B13

42' x 7'

Single sided banner



\$4700

GC-B22

30' x 6'

Single sided banner



\$7500

GC-B23

42' x 7'

Single sided banner



\$2200

GC-CL1

7' 6" wide x 3' 8" high (qty 3)
Single sided cling
One side only



\$1950

GC-CL2

5' 6.5" wide x 3' 8" high (qty 3)
Single sided cling
One side only



\$2200

GC-CL3

7' 6" wide x 3' 8" high (qty 3)
Single sided cling
One side only



\$1950

GC-CL4

5' 6.5" wide x 3' 8" high (qty 3)

Single sided cling

One side only



\$2200

GC-CL5

A = 7' 6" x 3' 8" (qty 2)

B = 7' 6" x 2' 10.5" (qty 1)

Single sided cling

One side only



\$1950

GC-CL6

5' 6.5" wide x 3' 8" high (qty 3)

Single sided cling

One side only



\$2200

GC-CL7

A = 7' 6" x 3' 8" (qty 2)
 B = 7' 6" x 2' 10.5" high (qty 1)
 Single sided cling
 One side only



\$1950

GC-CL8

5' 6.5" x 3' 8" (qty 3)
 Single sided cling
 One side only



\$2200

GC-CL9

A = 7' 6" x 3' 8" (qty 2)
 B = 7' 6" x 2' 10.5" high (qty 1)
 Single sided cling
 One side only



\$1950

GC-CL10

5' 6.5" x 3' 8" (qty 3)

Single sided cling

One side only



\$2200

GC-CL11

A = 7' 6" x 3' 8" (qty 2)

B = 7' 6" x 2' 10.5" high (qty 1)

Single sided cling

One side only



\$1950

GC-CL12

5' 6.5" x 3' 8" (qty 3)

Single sided cling

One side only



\$39,284

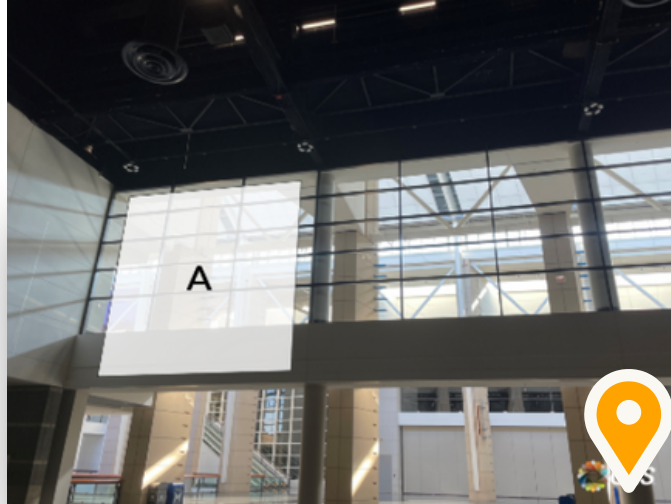
N3-B1

70' x 26'

Single sided banner

***Above NFDA registration**

Sizing can be adjusted for lower price



\$8700

N3-B2

20' x 20'

Single sided banner

***Leaving expo hall**

Sizing can be adjusted for lower price



SOLD

N3-B3

20' x 20'

Single sided banner

***Leaving expo hall**

Sizing can be adjusted for lower price



\$8700

N3-B4

20' x 20'

Single sided banner

***Leaving expo hall**

Sizing can be adjusted for lower price



\$8700

N3-B5

20' x 20'

Single sided banner

***Leaving expo hall**

Sizing can be adjusted for lower price



\$39,284

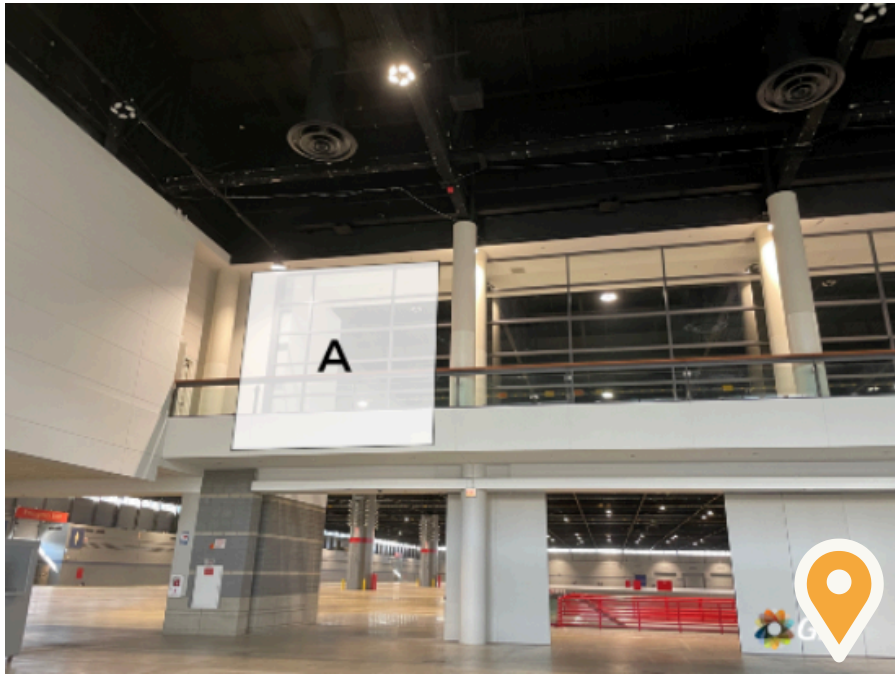
N3-B6

70' x 26'

Single sided banner

***Above Starbucks**

Sizing can be adjusted for lower price



\$8700

N3-B7

20' x 20'

***Entering expo hall**

Sizing can be adjusted for lower price



00

28

20' x 20'

***Entering expo hall**



3700

B9

20' x 20'

***Entering expo hall**

Sizing can be adjusted for lower price



3700

B10

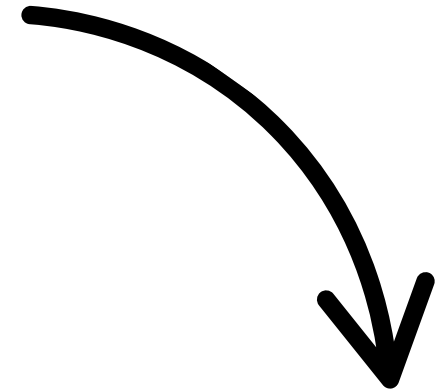
20' x 20'

***Entering expo hall**

Sizing can be adjusted for lower price



Will be located in front
of the escalators
in Expo Hall entrance

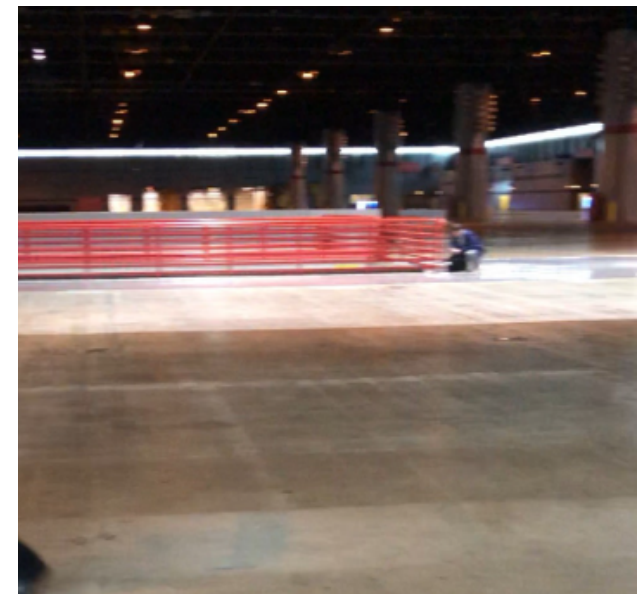


Call for Pricing

Video Wall in Expo Hall

Exclusive or Shared sponsor content

Visible during non-expo hours*



Fairmont Hotel Entrance Window Clings



Automatic Door

Call for Pricing

Window Clings
Measurements
Double sided



Tall Window

Call for Pricing

Window Clings
Measurements
Double sided